

# G022

London City Centre

London, ON

## SUITE DETAILS

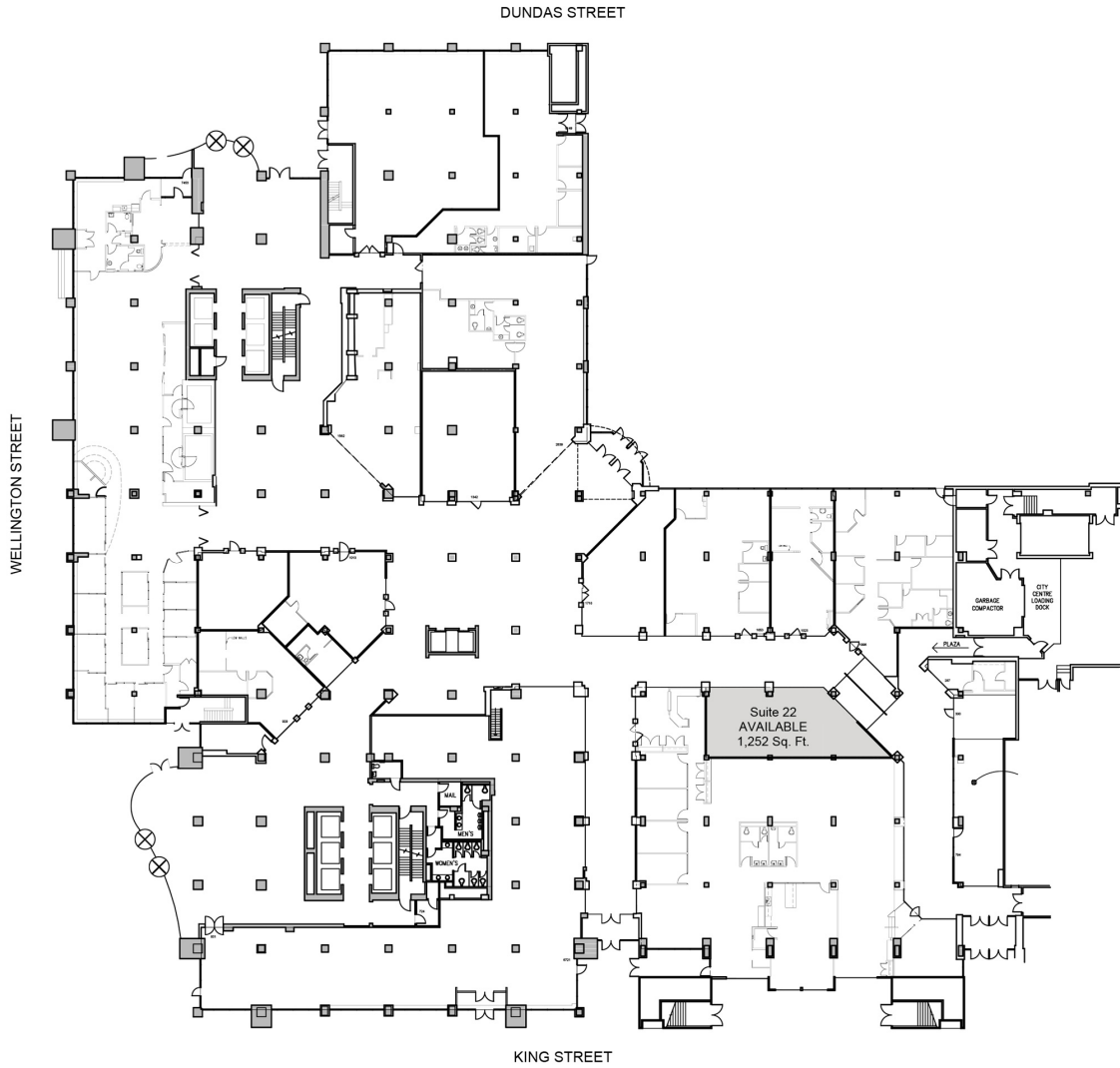
MIN DIVISIBLE	MAX CONTIGUOUS	UNIT TYPE
No	1,252 SF	Office
SQUARE FEET	FLOOR	AVAILABILITY
1,252 SF	Ground Floor	Immediate

**BASIC RENT**  
\$11.95

**ADDITIONAL RENT**  
\$15.99

**GROSS COST PER SF**  
\$27.94

**COST PER MONTH**  
\$2,915.07



 USABLE AREA

SCALE : 1" = 20'

