

# G009

London City Centre

London, ON

**BASIC RENT**  
\$11.95

**ADDITIONAL RENT**  
\$17.62

**GROSS COST PER SF**  
\$29.57

**COST PER MONTH**  
\$2,865.83

## SUITE DETAILS

**MIN DIVISIBLE**  
No

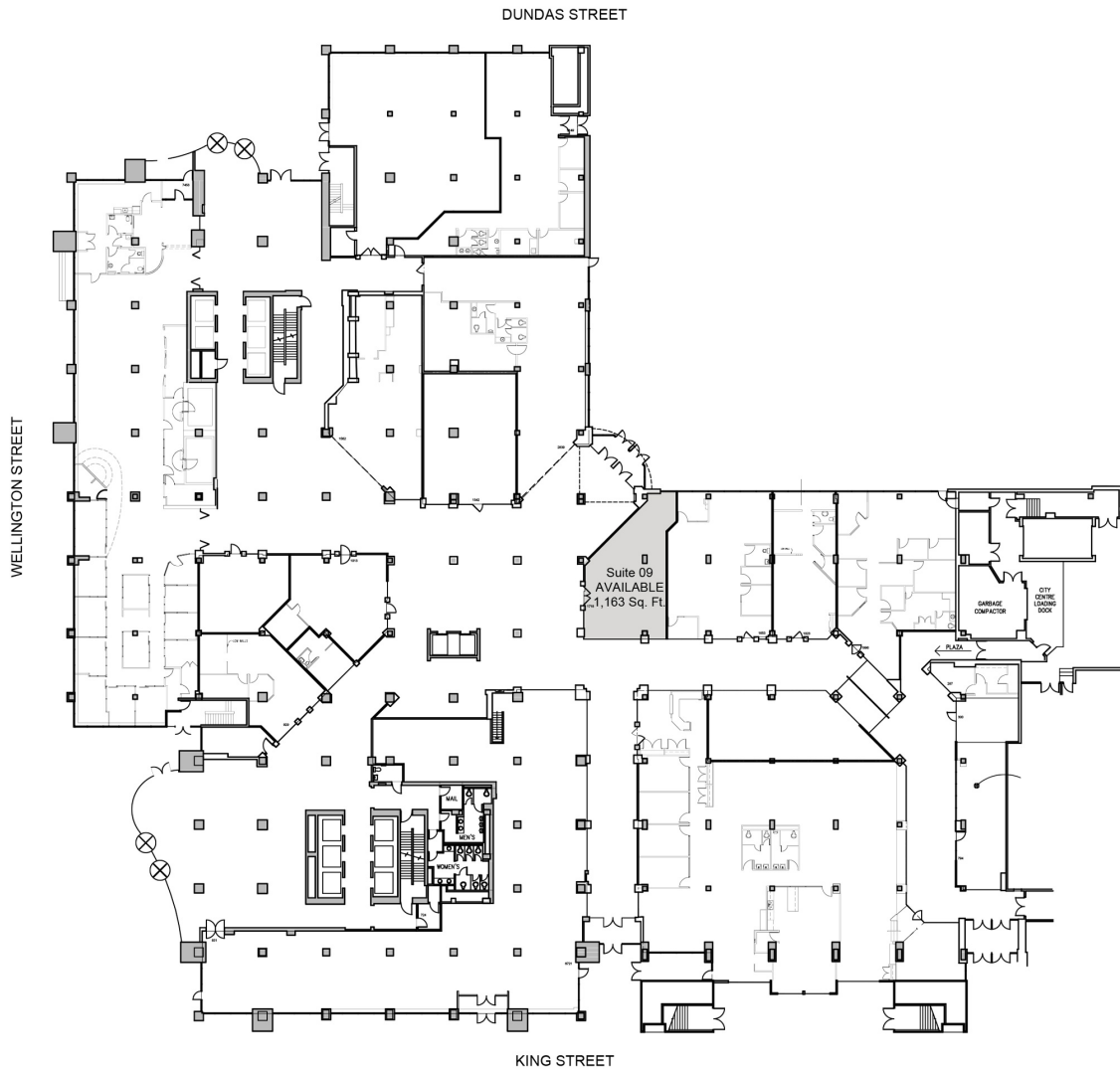
**MAX CONTIGUOUS**  
1,163 SF

**UNIT TYPE**  
Retail

**SQUARE FEET**  
1,163 SF

**FLOOR**  
Ground Floor

**AVAILABILITY**  
Immediate



USABLE AREA

SCALE : 1" = 20'

