

# 703

2810 Matheson

Mississauga, ON

**BASIC RENT**  
\$16.00

**ADDITIONAL RENT**  
\$17.16

**GROSS COST PER SF**  
\$33.16

**COST PER MONTH**  
\$5,750.50

## SUITE DETAILS

**MIN DIVISIBLE**  
No

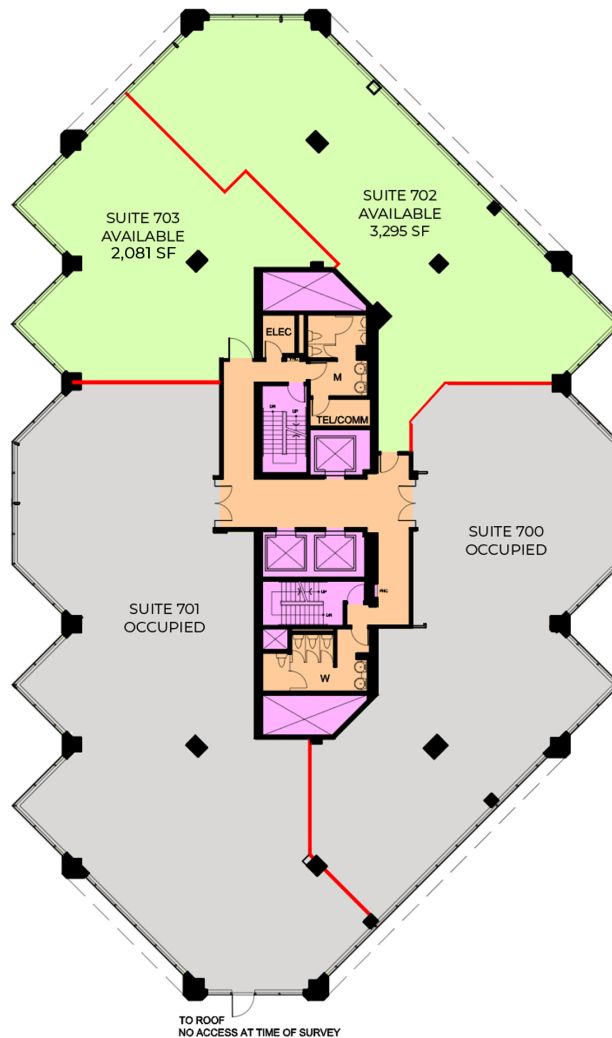
**MAX CONTIGUOUS**  
10,576 SF

**UNIT TYPE**  
Office

**SQUARE FEET**  
2,081 SF

**FLOOR**  
7

**AVAILABILITY**  
Immediate



— DEMISING WALL

0 10 50 FT.

