

801

2810 Matheson

Mississauga, ON

BASIC RENT
\$16.00

ADDITIONAL RENT
\$17.33

GROSS COST PER SF
\$33.33

COST PER MONTH
\$6,843.76

SUITE DETAILS

MIN DIVISIBLE
Yes

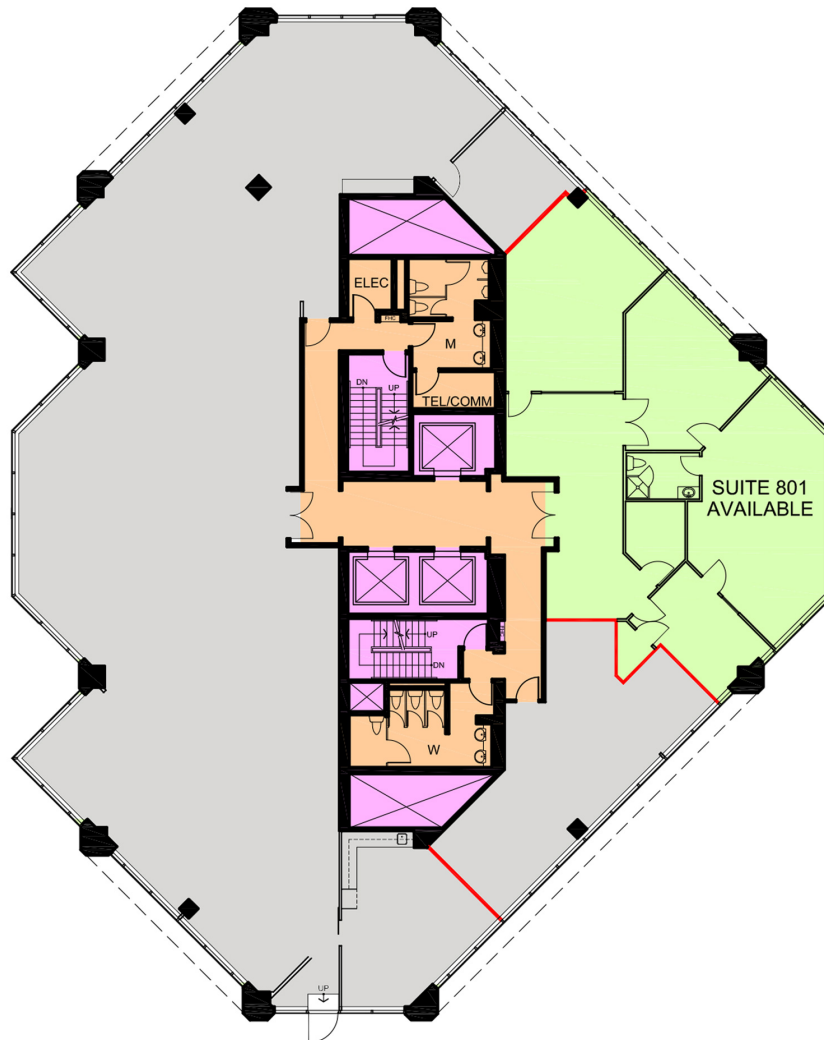
MAX CONTIGUOUS
3,328 SF

UNIT TYPE
Office

SQUARE FEET
2,464 SF

FLOOR
8

AVAILABILITY
Immediate



- USABLE AREA
- VERTICAL PENETRATIONS
- FLOOR COMMON AREA

0 10 50 FT.

