

1100A

5700 Yonge St.

Toronto, ON

BASIC RENT
\$23.00

ADDITIONAL RENT
\$19.92

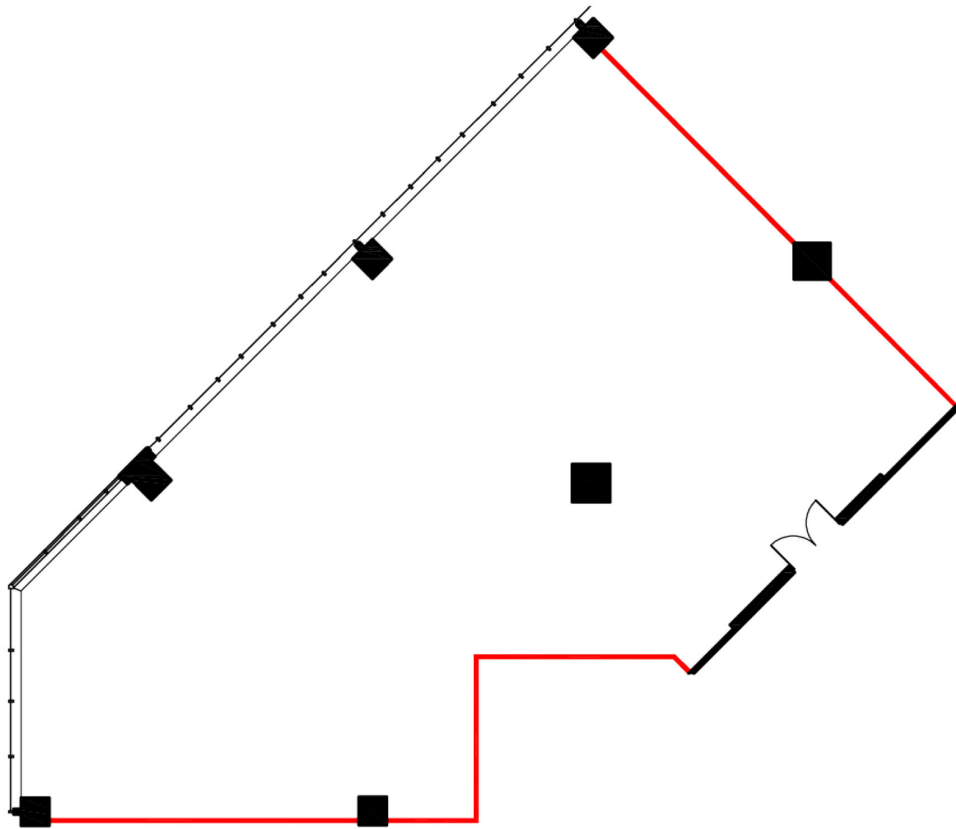
GROSS COST PER SF
\$42.92

COST PER MONTH
\$13,923.96

SUITE DETAILS

UNIT TYPE	SQUARE FEET	FLOOR
Office	3,893 SF	11

AVAILABILITY
Immediate



the recipient's reliance upon the Information. The recipient of the Information should take such steps as the recipient may deem necessary to verify the Information prior to placing any reliance upon the Information. The Information may change and any property described in the Information may be withdrawn from the market at any time without notice or obligation to