

# 300

5001 Yonge St.

Toronto, ON

**BASIC RENT**  
\$20.00

**ADDITIONAL RENT**  
\$20.87

**GROSS COST PER SF**  
\$40.87

**COST PER MONTH**  
\$64,479.24

## SUITE DETAILS

**MIN DIVISIBLE**  
Yes

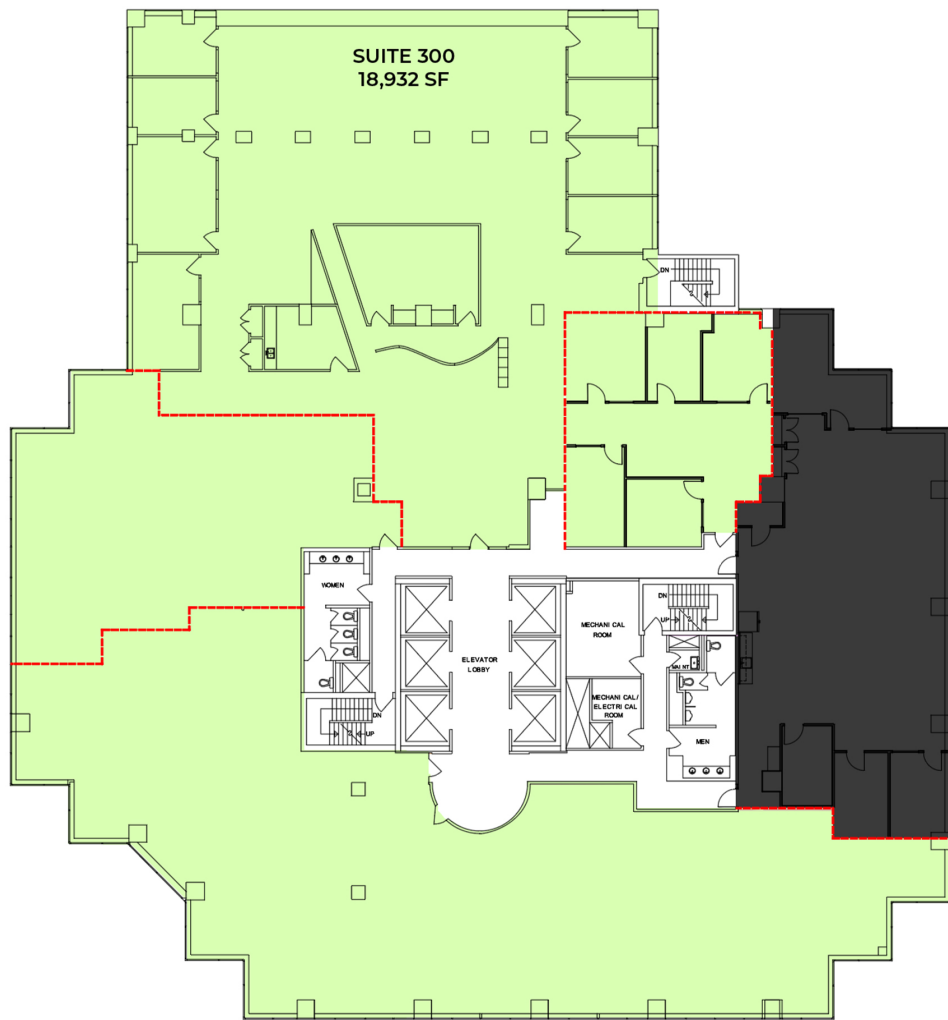
**MAX CONTIGUOUS**  
18,932 SF

**UNIT TYPE**  
Office

**SQUARE FEET**  
18,932 SF

**FLOOR**  
3

**AVAILABILITY**  
Immediate



■ AVAILABLE  
■ OCCUPIED  
- - - DEMISING WALL

0 10 50 FT.

